

APPROPRIATE FOR

Acoustic Tiles
Decosorb
dbSilent Panel
dbPlush
Vista
Ready-Clip panel
Groove Panel

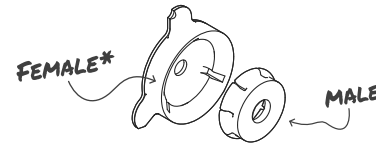
STENCIL*



*Of purchased product

READY-CLIP™

*Already attached to panel

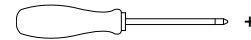


SCREWS

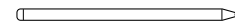


8g GIB Screws

NOT INCLUDED



Phillips



Pencil



Masking Tape



Measuring tape



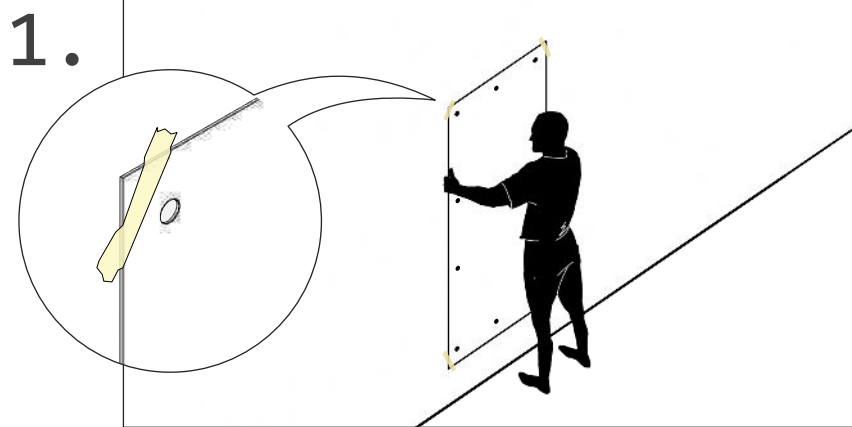
2 x person
assembly
recommended*



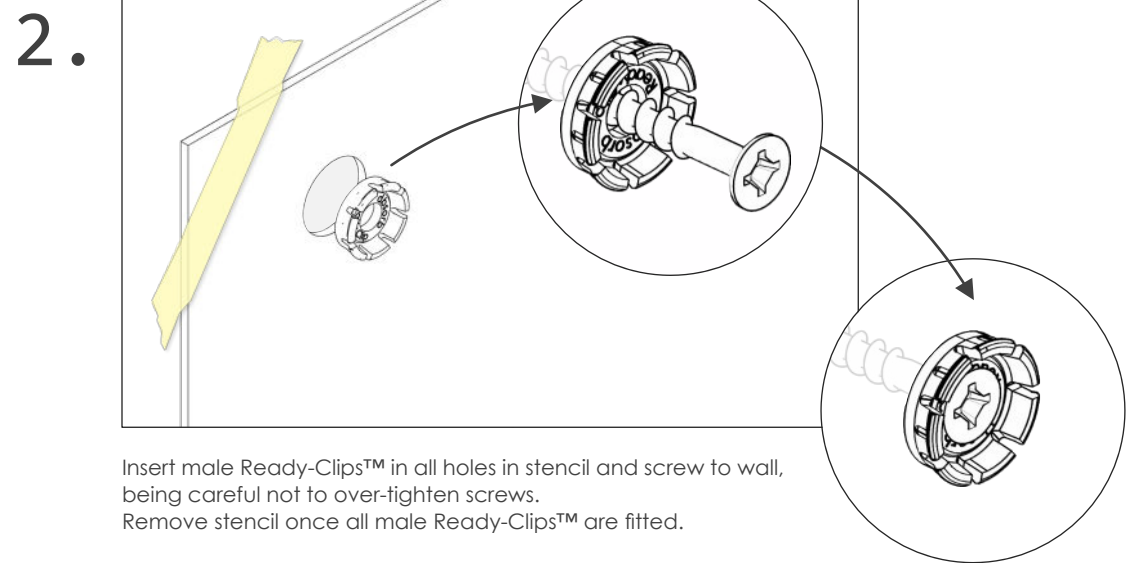
2 x ladder
recommended*

*For ceiling

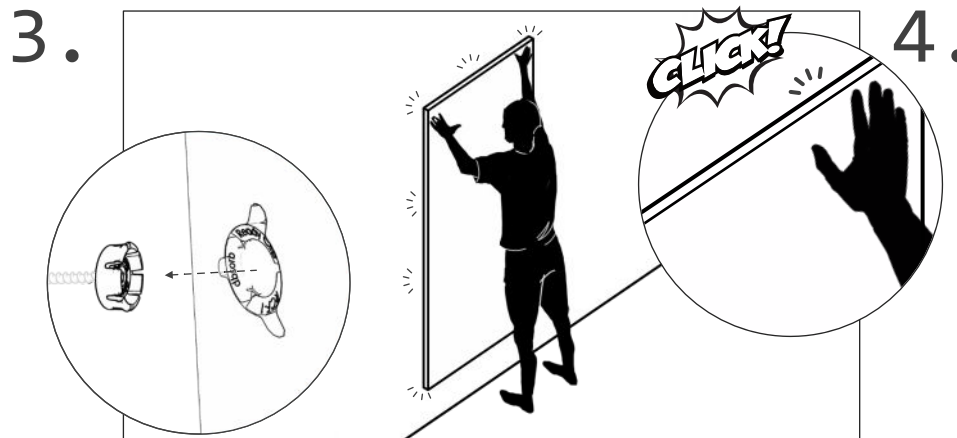
Ready-Clip™ INSTALLATION GUIDE



Align stencil to surface of install, attach to wall using a stapler, masking tape or pins. Take that the stencil is flat, it is critical to have precise location of fitments.

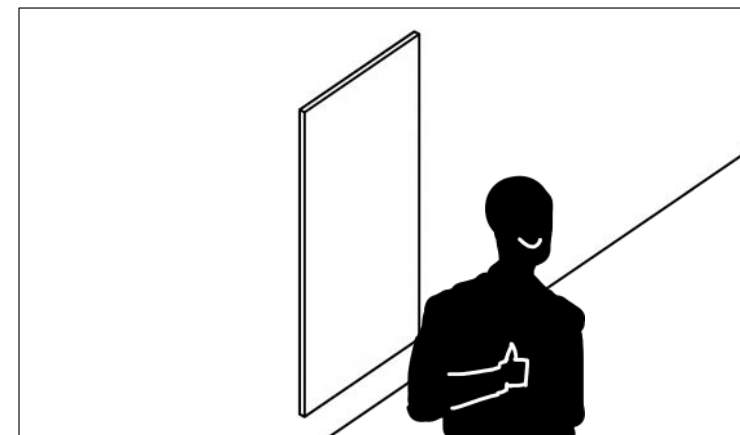


Insert male Ready-Clips™ in all holes in stencil and screw to wall, being careful not to over-tighten screws.
Remove stencil once all male Ready-Clips™ are fitted.



Align acoustic panel, making sure the Male and Female* Ready-Clips™ are positioned correctly
Firmly push at each fitment spot until Clips lock into place.

*Female Ready-Clips™ already installed in Acoustic Panel



Enjoy your finished acoustic panel!