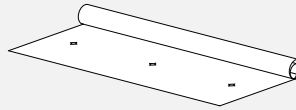


# Ready-Clip™ INSTALLATION GUIDE • WALL & CEILING

## APPROPRIATE FOR

Acoustic Tiles  
Decosorb  
dbPlush  
Vista  
Ready-Clip panel  
Groove Panel  
Acoustic Art

## STENCIL



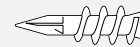
## SCREWS



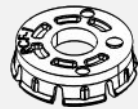
M4 Screws



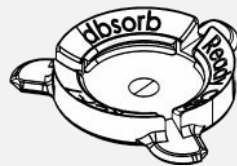
Drywall anchors



## Ready-Clip



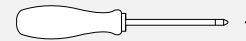
Male ready-clip



Female ready-clip\*

\*Already attached to panel

## NOT INCLUDED



Phillips



Pencil



Measuring tape



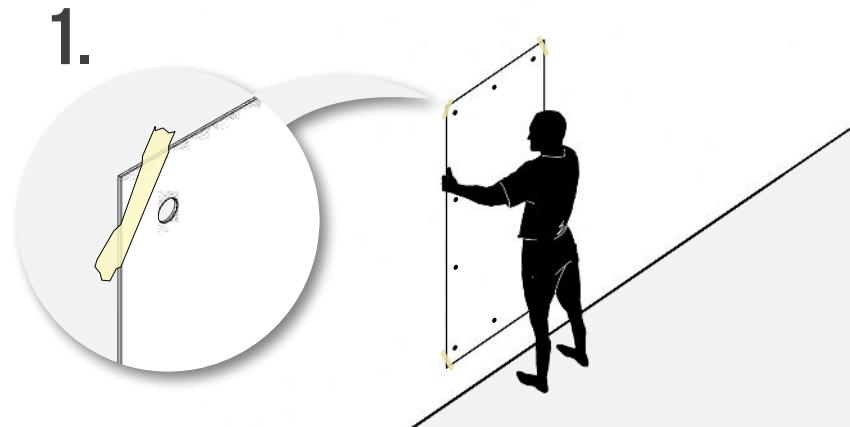
2 x person  
assembly  
recommended\*



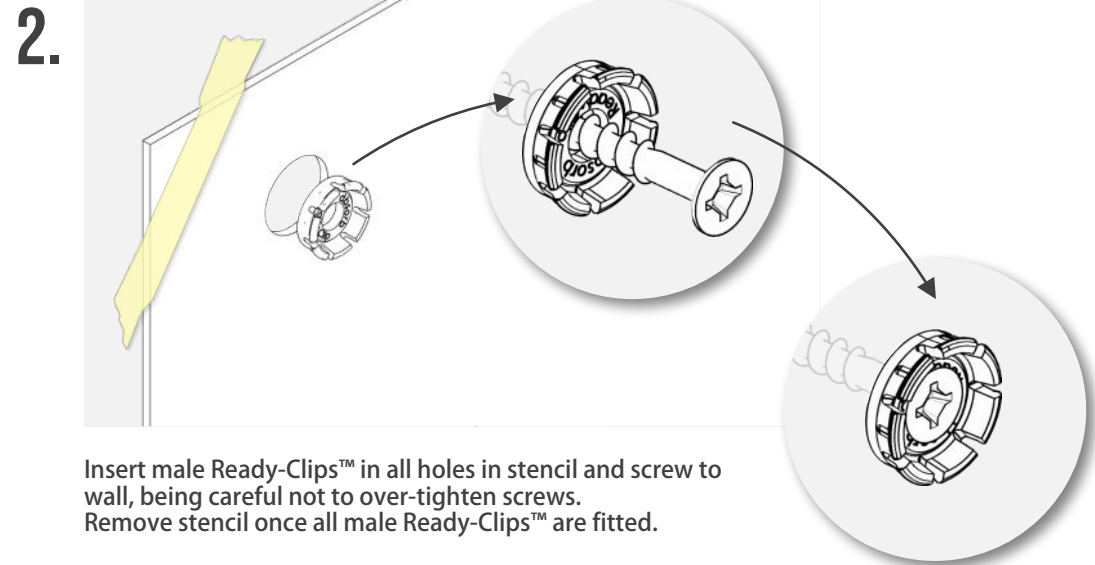
2 x ladder  
recommended\*

\*For ceiling

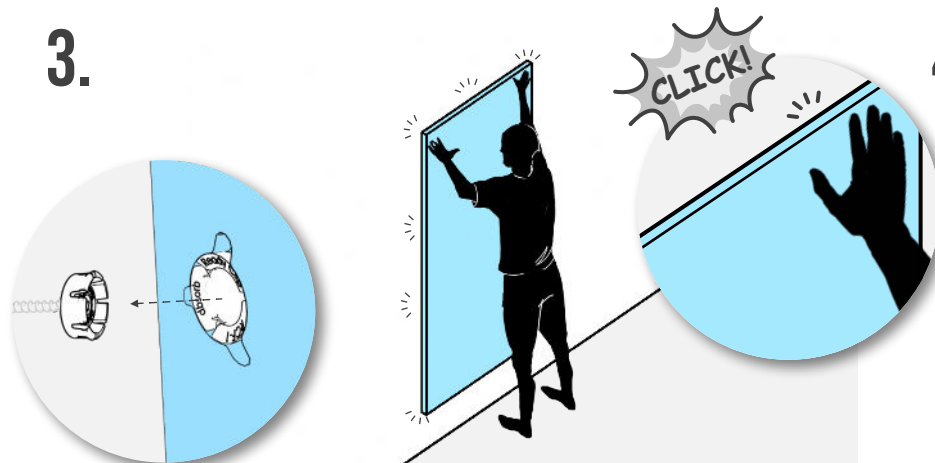
# Ready-Clip™ INSTALLATION GUIDE



Align stencil to surface of install, attach to wall using a stapler, masking tape or pins. Take that the stencil is flat, it is critical to have precise location of fitments.

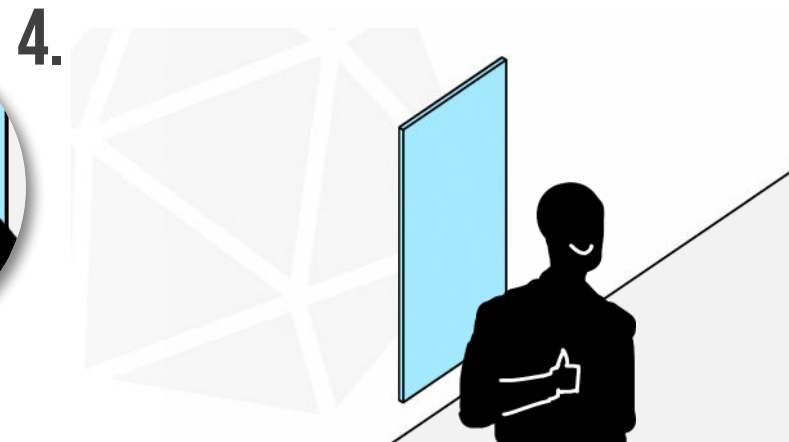


Insert male Ready-Clips™ in all holes in stencil and screw to wall, being careful not to over-tighten screws. Remove stencil once all male Ready-Clips™ are fitted.



Align acoustic panel, making sure the Male and Female\* Ready-Clips™ are positioned correctly. Firmly push at each fitment spot until Clips lock into place.

\*Female Ready-Clips™ already installed in Acoustic Panel



Enjoy your finished acoustic panel!